

Leeds
Grenville 175
YEARS



WELCOME

Leeds Grenville Economic Development Summit

November 21, 2025

#LGEcDevSummit

where **lifestyle**
grows good **business**

Welcome

**Ann Weir - Summit MC
Economic Development Manager
United Counties of Leeds and Grenville**



#LGEcDevSummit

Breakfast

Fresh Baked Adventures

1000
ISLANDS
RIDEAU
CANAL
WATERWAYS

- **Willard's Village Bakery-Deli**, Athens – Old Fashioned Donuts
- **Tait's Fresh Start**, Brockville – Apple / Chocolate Chip Banana Loaves
- **Grahame's Bakery**, North Grenville – Apple Fritters
- **Violets on Main**, Merrickville-Wolford – Berry / Cheddar and Chive Scones
- **The Crusty Bakers**, North Grenville – Sausage Rolls

1000islandsrideaucanalwaterways.com/adventures



Summit Details

[Invest.leedsgrenville.com/summit2025](https://invest.leedsgrenville.com/summit2025)

- On the table / online - Agenda, Speaker Bios, Participants List
- Evaluation Form
- #LGEcDevSummit



#LGEcDevSummit

Greetings



Michael Barrett, MP

Leeds-Grenville-Thousand Islands and Rideau Lakes



#LGEcDevSummit

Greetings



#LGEcDevSummit

Greetings

Corinna Smith-Gatcke

Warden, United Counties of Leeds and Grenville

Mayor, Township of Leeds and the Thousand Islands



Economic Development Team



Andrew Stacey, Shelbi McFarlane, Carol Hardy, Ann Weir, Cyndy Bolton, Brennan Eland, Joanne Poll



#LGEcDevSummit

Celebrating 175 Years



- Incorporated in 1850
- 16 Townships with the authority to appoint Reeve and Deputy Reeve
- Counties Council - 40 members
- 1990 Municipal Act revisions to municipal restructuring
- 1996 Province exercised this power and amalgamated municipalities
- Result - 10 municipalities with only mayoral representation at Counties
- Council elected a Warden annually until 2011



#LGEcDevSummit

Celebrating 175 Years

Corinna Smith-Gatcke

Warden, United Counties of Leeds and Grenville



#LGEcDevSummit

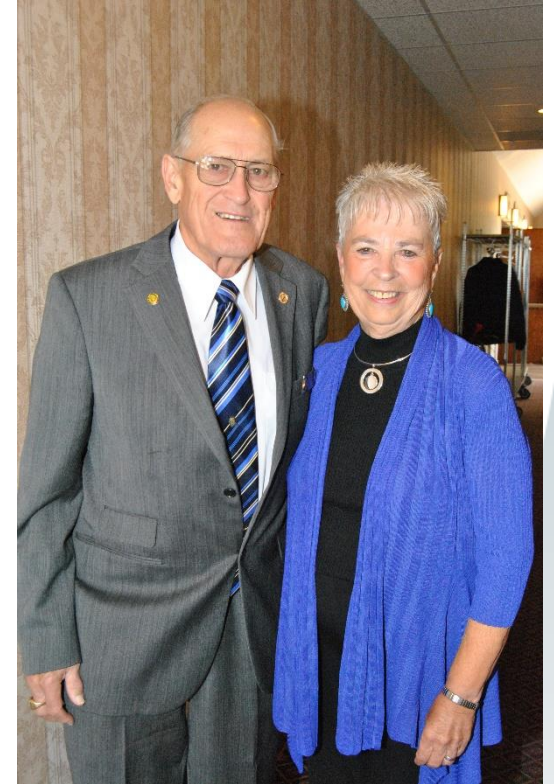
Past Wardens of Leeds Grenville since 1954

Clifford Birtch	1954	Grant Christie	1971	Bill Maitland	1987	Douglas Struthers	2005, 2007
W. H. Finnerty	1955	Art Modler	1972	John Dancy	1988	Ron Holman	2006
G. Mills	1956	Ken Pratt	1973	Betty Weedmark	1989	Jim Pickard	2008
Harold Ralph	1957	Bill Thake	1974, 1992, 2001, 2010	Arch Ostrom	1990	Mel Campbell	2009, 2011 - 2012
W. S. Leeder	1958	Art Casselman	1975	Dave Sloan	1991	Ron Holman	2013 - 2014
A. Carnochan	1959	Nelson Webster	1976	Patrick McGahey	1993	Dave Gordon	2015 - 2016
W. J. Bell	1960	Charlie Bradley	1977	Robert Smith	1994	Robin Jones	2017 - 2018
W. Black	1961	Everton Strong	1978	Kenneth Finnerty	1995	Patrick Sayeau	2019 - 2020
Orville Forrester	1962	Stuart Cook	1979	Ronald Pollard	1996	Roger Haley	2021 - 2022
Ernie Ralph	1963	Jim Barclay	1980	Joan Williams Birch	1997	Nancy Peckford	2023 - 2024
H. McNeely	1964	Trevor Pelton	1981	Howard French	1998, 1999	Lesley Todd, Honourary	2024
W. E. Burchell	1965	Don Hunter	1982	Don Cameron	2000	Corinna Smith-Gatcke	2025 - 2026
Don Ferguson	1966	Jim McLaughlin	1983	Harold Grier	2002		
George Brown	1967	Cecil Kinch	1984	David Dobbie	2003		
Doug Moore	1968	Carl Polite	1985	Herb Scott	2004		
Don Empey	1969	Ron Godkin	1986	Barb Champagne, Hon.	2004		
E. I. Miller	1970						

Past Wardens in Attendance Today

- Howard French 1998, 1999
- Douglas Struthers 2005, 2007
- Robin Jones 2017 - 2018
- Roger Haley 2021 - 2022
- Nancy Peckford 2023 - 2024
- Corinna Smith-Gatcke 2025 - 2026 - current

Remembering Bill Thake



#LGEcDevSummit

Bill Thake Memorial Economic Development Leadership Award

Congratulations!!!



#LGEcDevSummit

The Rideau Canal: Looking Ahead



Mark Brus

Manager of Operations,
Rideau Canal National Historic Site, Parks Canada

Speaker Gifts – Foodie Shop Adventures

Foodie Shop Adventures



- **Pickle & Myrrh**, Merrickville-Wolford – Caramels
- **Halladay Maple**, – Elizabethtown-Kitley – Maple Syrup
- **Hall's Apple Market**, Elizabethtown-Kitley – Sparkling Apple Cider
- **Mrs. McGarrigle's Fine Food Shop**, Merrickville-Wolford – Mustard



1000islandsrideaucanalwaterways.com/adventures



#LGEcDevSummit

Break | Reconvene 10:15 am



- **Willard's Village Bakery-Deli**, Athens – Old Fashioned Donuts
- **Tait's Fresh Start**, Brockville – Apple / Chocolate Chip Banana Loaves
- **Grahame's Bakery**, North Grenville – Apple Fritters
- **Violets on Main**, Merrickville-Wolford – Berry / Cheddar and Chive Scones
- **The Crusty Bakers**, North Grenville – Sausage Rolls

1000islandsrideaucanalwaterways.com/adventures



#LGEcDevSummit

Envisioning Eastern Ontario's Electricity Future



Independent Electricity System Operator
(IESO)

Kennan Ip

Senior Manager, Transmission Integration



Brian Gordon

Senior Manager, Regional & Community
Engagement



#LGEcDevSummit

STEVE CLARK

MPP - Leeds-Grenville-Thousand Islands and Rideau Lakes

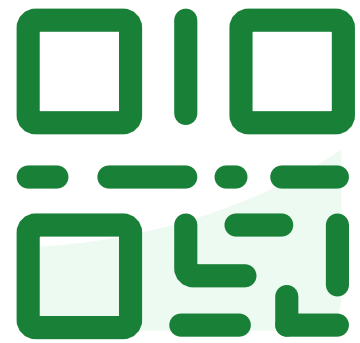


#LGEcDevSummit

Keynote: Protecting Ontario's Small Businesses, Jobs, and Economy



Hon. Nina Tangri
Associate Minister of Small Business



**Join at slido.com
#3825266**



What type of support from the Ontario government would make the biggest difference for your business? Pick your top 2.



If you could partner with one group to strengthen small business success in our region, who would it be? Pick your top 2.



In one word describe what you enjoy most about doing business in Leeds and Grenville.

Keynote: Protecting Ontario's Small Businesses, Jobs, and Economy



Hon. Nina Tangri
Associate Minister of Small Business

Bottle & Barrel Adventures – Behind the Brews

Bottle & Barrel Adventures

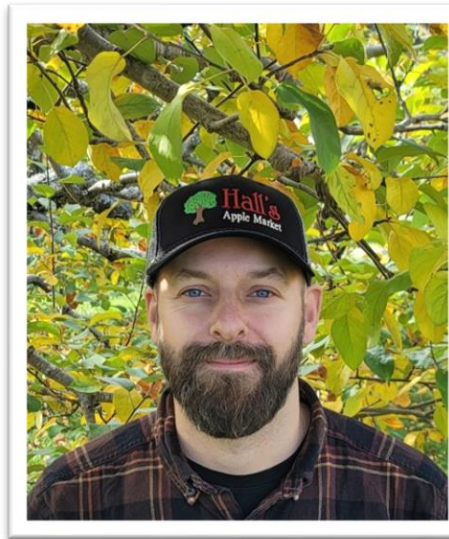
1000 ISLANDS
RIDEAU
CANAL
WATERWAYS



Moderator: Carol Hardy
Small Business Development
Officer, Leeds Grenville
Economic Development



Sean Lucey
President,
Windmill Brewery



Matthew Shapton
Co-Owner and Head
Cider Brewer,
Hall's Apple Market



Jocelyn Major
Co-Founder / CEO,
Kemptville Brewing Company

Talent Attraction and Workforce Development

SPECIAL ANNOUNCEMENT



EASTERN WORKFORCE
INNOVATION BOARD
Nurturing a stronger workforce

#LGEcDevSummit

Lunch | Local Flavours

Local Foods / Fresh Baked

- **Grahame's Bakery**, North Grenville - Bread
- **Rideau Roastery**, North Grenville - Coffee
- **Bushgarden Farmstead**, Rideau Lakes - Cheese
- **Milkhouse Farm & Dairy**, Smiths Falls - Cheese
- **Biemond – Upper Canada Creamery**, Alexandria - Cheese
- **Enright Cattle Company**, Renfrew County - Beef Brisket
- **Harmony Farm**, Elizabethtown-Kitley - Produce
- **Hall's Apple Market**, Elizabethtown-Kitley - Apple Squares
- **Pastry King's Princess**, Elizabethtown-Kitley - Brandy Snaps
- **Nut Free Gourmet Bakeshop**, Rideau Lakes - Chocolate Chip Cookies
- **Sunflower Bake Shop**, Rideau Lakes - Pumpkin Cake
- **Katarina's Coffee Shop**, Prescott - Brownies
- **Sweet Ofelia Café**, Brockville - Gluten Free Shortbread Cookies

**Fresh Baked
Adventures**



#LGEcDevSummit

Lunch | Networking

- Arena Lobby
 - 2 setups, please use both sides of the buffet tables
- Special dietary requests
- Clean-up tables at the back
- 1:00 pm Reassemble



#LGEcDevSummit

Lunch | Local Flavours

Local Foods / Fresh Baked

- **Grahame's Bakery**, North Grenville - Bread
- **Rideau Roastery**, North Grenville - Coffee
- **Bushgarden Farmstead**, Rideau Lakes - Cheese
- **Milkhouse Farm & Dairy**, Smiths Falls - Cheese
- **Biemond – Upper Canada Creamery**, Alexandria - Cheese
- **Enright Cattle Company**, Renfrew County - Beef Brisket
- **Harmony Farm**, Elizabethtown-Kitley - Produce
- **Hall's Apple Market**, Elizabethtown-Kitley - Apple Squares
- **Pastry King's Princess**, Elizabethtown-Kitley - Brandy Snaps
- **Nut Free Gourmet Bakeshop**, Rideau Lakes - Chocolate Chip Cookies
- **Sunflower Bake Shop**, Rideau Lakes - Pumpkin Cake
- **Katarina's Coffee Shop**, Prescott - Brownies
- **Sweet Ofelia Café**, Brockville - Gluten Free Shortbread Cookies

Fresh Baked
Adventures



Reassemble
1:00 pm



#LGEcDevSummit

Keynote: Steady Hands: Adapting to Economic Change



Brock Dickinson
Stonebridge Solutions LP

Cross-Border Customs Update: Tariffs, De-minimis, and What It Means to You



Jesse Mitchell

**Director of Business Development,
Strader-Ferris International**



#LGEcDevSummit

Leeds Grenville 1000 Islands Rideau Canal Waterways

November 21, 2025

#LGEcDevSummit

where **lifestyle**
grows good **business**

Leadership and Capacity Building

- Economic Development Summit



- Business Support Working Group – quarterly
 - Municipalities, Chambers, Downtowns, CFDCs, Small Business Centres, Employment Agencies, Ministry Representatives, Post-secondary Education
 - 2025 Business Survey - 360 responses / **285 for-profit businesses**

Investment Readiness / Investment Attraction



Sarah McGuire
Luella Charlotte Boutique

Phil Audet
ArBru Solar Brewery

Mayure Vadher
MaBorytown Pharmacy



Natalie Castellias
Catered Affairs

Erin Kergen
Pickle and Myrrh

Kal Patel
Athens Physiotherapy



Leeds Grenville invites highly skilled immigrants for in-demand careers to be part of the Ontario Regional Economic Development through Immigration (REDI) pilot program. For more information see www.investleedsgrenville.com/REDI

Leeds Grenville 175 YEARS

Your Big Idea Deserves the Right Space

New Businesses Welcome

Join many entrepreneurs who've found their place where **lifestyle grows good business**

www.investleedsgrenville.com
econdev@udg.on.ca
613-342-3840



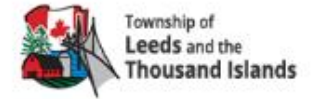
United Counties of Leeds and Grenville
Economic Development and Small Business

Real Estate



[View listing details](#)

A rare commercial opportunity awaits with Harmer's Cottages. Sitting on a private sandy beach along the St. Lawrence River, it features six charming two-bedroom cottages and a renovated two-storey main house on over two acres of pristine waterfront. The main building has an office, three bedrooms, two bathrooms, and sweeping river views. Each charming cottage offers a private deck with chairs, BBQ, and picnic table. A shared dock invites swimming and boating. This beautiful property can make your 1000 Islands dream a reality.



View [map](#) for 135 Thousand Islands Parkway.



#LGEcDevSummit

Business Retention and Expansion

Visitations



FIONA
MACINTYRE
DESIGN



#LGEcDevSummit

Small Business



SMALL BUSINESS

Servicing

Athens, Augusta, Brockville
Edwardsburgh Cardinal
Elizabethtown-Kitley (south)
Front of Yonge
Leeds and the Thousand Islands
Gananoque, Prescott, North Grenville

Small BUSINESS ADVISORY CENTRE

HELPING SMALL BUSINESS GROW

Servicing

Elizabethtown-Kitley (north)
Merrickville-Wolford
Rideau Lakes
Westport



#LGEcDevSummit

Small Business

Consults

Summer Company

STARTER Company PLUS



#LGEcDevSummit

Small Business

International Women's Day

BRIDGES to Better Business



#LGEcDevSummit

New – Leeds Grenville Wholesale Food Tradeshow



9 Sellers / Vendors
30 Buyers



#LGEcDevSummit

Small Business



Thurs Jan 15th @10am Starting a Food Business & Regulatory Compliance (1 hour)

- ✓ Creating a Business Model
- ✓ Doing Your Market Research & Competitive Analysis
- ✓ What is Your Value Proposition?
- ✓ Understanding Municipal Licensing & Bylaws
- ✓ Health, Building & Fire Inspections for Food Sector

PRESENTER – PHIL SINGERIS
Program Coordinator

Thurs Jan 22nd @10am How to Sell Your Food Product (1 hour)

- ✓ How to Set your Pricing for Success
- ✓ Positioning your Product in the Market
- ✓ Building an Audience of Raving Fans
- ✓ The Key Things you can do to Secure the Sale

PRESENTER – NICOLE HANEY
Business Coach/Food Entrepreneur

Thurs Jan 29th @10am Costing & Pricing to Make Profits (1 hour)

- ✓ Understanding your COGS
- ✓ Cash Flow Management
- ✓ Planning for Profits
- ✓ Mistakes to Avoid

PRESENTER –RAMONA GALLAGHER
Business Coach



#LGEcDevSummit

Talent Attraction and Workforce Development

Regional Economic Development through Immigration Pilot (REDI)

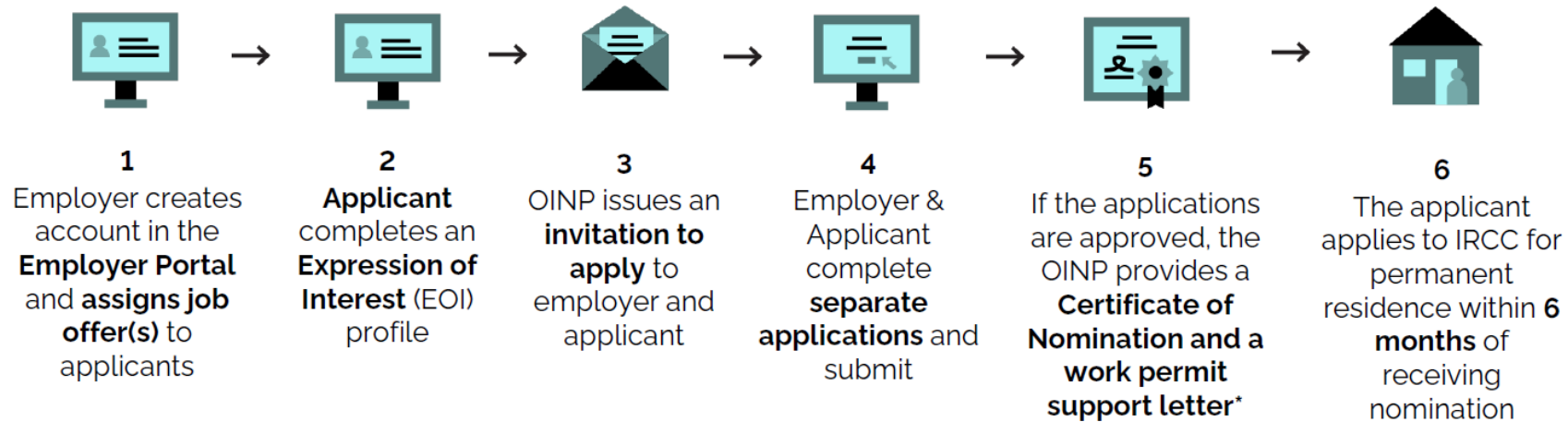
- Promotes economic immigration
- Pathway to permanent residence for skilled foreign workers with a job offer
 - Streams: Foreign Worker, International Student, In Demand
- 200 nominations through the Ontario Immigrant Nominee Program
- Labour Needs
 - Health Human Resources
 - Family doctors, nurse practitioners, PSWs, other health professionals
 - Broader Economic Development Initiatives
 - Skilled trades, other



#LGEcDevSummit

Regional Economic Development through Immigration

Employer Job Offer Streams: How to Apply – **NEW** Employer-led process in the Employer Portal



Ontario 

** Both documents are valid for 6 months.*

Regional Economic Development through Immigration

Results to date:

- 142 immigrant enquiries
 - 36 applications processed
 - 51 business / applicants invited to submit full application
-
- Program deadline December 31, 2025
 - Request for program extension



Regional Economic Development through Immigration

EMPLOYER	# of files
Brockville General Hospital	9
United Counties of Leeds and Grenville	9
Biscuits LeClerc Ltee.	6
Northern Cables Inc.	3
Jay Badri Vishal Hospitality Inc.	2
Burnbrae Farms Limited	1
Hewitt (Brockville) Ltd.	1
Novaflow Systems Inc.	1
Active Health Services Ltd.	1
Carveth Nursing Home Ltd.	1
Dr. Dong Li Dentistry Professional Corp.	1

Marketing - eNewsletter / Business Directory



Economic Development eNews | August 19, 2025

Business Profile

An Award-Winning Experience with a Side of Innovation



ELGIN – "It's a labour of love for the whole family," says Lead Cook Kody, one of four members of the White family that owns and operates Stoodley's Kitchen & Beverage.

Reflecting on the renovations that were powered by family and friends, Kody describes the journey that began with take-out service opening in early spring 2024 to generate revenue while the rest of the business took shape. "We were surprised it got so busy so quickly," Kody recalls. In-house dining started that fall.

Today, Stoodley's is more than a restaurant, "it's a welcoming hub where people can sit and unwind," says dad Robb. Whether being welcomed inside the cozy dining room by his daughter Jessie-Leigh and wife Chris, or by patio staff, you'll be warmed by the hospitality and the heaters that stretch the outdoor season well into spring and fall. "One of our goals was to establish the restaurant as a community mainstay offering a unique experience," says Kody.

Their social media pages share menu specials and events like karaoke nights and live music. From Elgin Days to spontaneous celebrations, Stoodley's is a come-as-you-are kind of place.

The food speaks for itself. Popular menu items include handhelds and flatbreads, the burgers are made from fresh ground chuck and the onions are slowly caramelized. Many of the fresh ingredients are sourced locally. "We take pride in every plate,"



Economic Development eNews | August 5, 2025

Business Profile

The Perfect Angle with a Sharp Focus on Detail

WESTPORT - "Photography invites conversations," says Trevor Connell, a creative professional committed to "showing my clients in their best light."

Offering professional portrait, lifestyle, product, food, and environmental photography services, the Trevor Connell Photography portfolio also includes brand development such as colour palette, logo design and brand voice; website development that can include an online store; social media management consisting of the production of images, posts, scheduling and monitoring; creating blogs, articles and written content, and consulting. As a local business owner with years of experience, he offers real-world solutions.

Educated in graphic design and print management at Ryerson University (now Toronto Metropolitan University), he worked in the GTA for a large commercial printer. "I always had my eye and mind on the visuals," he says, recognizing early on that compelling imagery was key to marketing success.

Recognizing the significant impact digital formats would offer, Trevor began producing digital product photography as a side gig. This soon incorporated headshots, lifestyle photos, and live events, which remain the core focus of his photography today.

Upon relocating to Westport, he continued to work from his home-based studio. After adapting to rural life, expanding his professional network, and growing his business, Trevor began volunteering his



Business Directory

TOTAL – 4576

Athens - 100

Augusta - 184

Brockville – 1,167

Edwardsburgh Cardinal - 197

Elizabethtown-Kitley - 301

Front of Yonge - 97

Gananoque - 315

Leeds and the Thousand

Islands - 372

Merrickville-Wolford - 231

North Grenville - 732

Prescott - 257

Rideau Lakes - 511

Westport – 112

*as of Nov. 6, 2025



1000 Islands / Mallorytown KOA Campground

1477 County 2 Road
Mallorytown, Ontario K0E 1R0

[Visit Website](#)

[View Details](#)



1000 Islands Brewery

65 King Street
Brockville, Ontario K6V 3P8

[Visit Website](#)

[View Details](#)

New - Marketing Partnership



#LGEcDevSummit

1000 Islands Rideau Canal Waterways – Adventures

Vision

- Year-round destination that entices visitors
- Unique, diverse, high-quality, and celebrated experiences



1000 Islands Rideau Canal Waterways – Adventure Series

**Fresh Baked
Adventures**



13 Businesses



**Fresh Baked Cafe
Adventures**



10 Businesses



**Foodie Shop
Adventures**



13 Businesses



**Garden
Adventures**



20 Sites



#LGEcDevSummit

1000 Islands Rideau Canal Waterways – Adventure Series

Bottle and Barrel Adventures



10 Businesses



1000 Islands Brewing Company – Brockville

ArBru Solar Brewery – Front of Yonge

BUSL – Front of Yonge

Gather Brewery and Glasswork – Merrickville-Wolford

Hall's Apple Market – Elizabethtown-Kitley

Kemptville Brewing Company – North Grenville

King's Lock Distillery – Edwardsburgh Cardinal

Scheuermann Vineyard & Winery – Westport

Westport Brewing Company – Westport

Windmill Brewery – Edwardsburgh Cardinal

1000 Islands Rideau Canal Waterways – Adventures



1000 ISLANDS RIDEAU CANAL WATERWAYS

Eat. Drink. Adventure.

Enjoy self-guided tours to the best cafes, bakeries, foodie shops and gardens where you'll discover delicious delights and beautiful sites. New in 2025—Bottle & Barrel Adventures will guide you to locally brewed craft beers, ciders, wines and spirits. Start planning your adventures and follow us online!

<p>Fresh Baked Adventures</p> <ul style="list-style-type: none"> Big Waters Bakery Athens The Crusty Bakers Kemptonville Forno Westport Graham's Bakery Kemptonville Hall's Apple Market Elizabethtown-Kitley Katerina's Coffee Shop Prescott Nut Free Gourmet Bakeshop Elgin Mrs. McGarrigle's Merrickville Panache Bakery & Cafe Gananoque The Pastry King's Princess Lyn Sunflower Bake Shop Fortlar Tata's Fresh Start Brockville Tasty Goddess Bake Shop Westport Violeta on Main Merrickville Willard's Village Bakery & Deli Athens 	<p>Foodie Shop Adventures</p> <ul style="list-style-type: none"> Best Bread Shop Cardinal The Butcher Shop Brockville Fortlar Dairy Fortlar Hall's Apple Market Elizabethtown-Kitley Healthy Ever After Merrickville Little Barcelona Prescott Luka's European Style Market Athens Mrs. McGarrigle's Fine Food Shop Merrickville Pickle & Myrrh Merrickville Ridgway Confections Seaboy's Bay Royal Yumaki's Fine Foods Westport Wendy's Country Market Lynhurst 	<p>Garden Adventures</p> <ul style="list-style-type: none"> Adair Gardens North Augusta AGG Art Trail Frankville Flowers + Fleace Johnstown Flowers of the Field Prescott Garden of Hope and Faith Walk Lyn Gardens of Brockville Brockville Gardens of Gananoque Gananoque Glen Elba Learning Centre Athens Healing Circle Laundry Johnstown The Ivy Lea Club Lansdowne The Kirk Farm Oxford Mills Maitland Garden of Herbs Maitland No. 9 Gardens Lynhurst The Opinion Elgin Rideau Woodland Ramble Merrickville Rockport Barn Malorytown Shakespeare's Gardens Prescott Sherwood Forest Malorytown Summerhaven Tulips Jasper Wildling Acres North Grenville
<p>Fresh Baked Cafe Adventures</p> <ul style="list-style-type: none"> Basiland Coffee House Delta Casies Brockville Luka's European Style Market Athens Recess Cafe Portland The Sweet Life Cafe Brockville Sweet Delta Cafe and Market Brockville Vanilla Beans Cafe and Creamery Westport The Village Bean Coffee House Merrickville The Village Pantry Spencerville Yellow Canoe Cafe Merrickville 	<p>Bottle & Barrel Adventures</p> <ul style="list-style-type: none"> 1000 Islands Brewery Brockville ArBru Solar Brewery Malorytown BUSL Cider Malorytown Gather Brewery & Distilleries Merrickville Hall's Apple Market Elizabethtown-Kitley Kempville Brewing Company Kemptonville King's Lock Craft Distillery Johnstown Schaefermann Vineyards + Winery Westport Westport Brewing Company Westport Windmill Brewery Johnstown 	<p>2000IslandsRideauCanalWaterways.com</p> <p>#1000IslandsRideauCanalWaterways</p>

SOUTH EASTERN ONTARIO

Drink it in!

Just a short drive away lies an inviting destination where rolling hills meet rich flavours, and where every sip and bite tell an unforgettable story. This fall, plan a tasting journey to discover the distinctive wines, ciders, and spirits that make this region special. South Eastern Ontario is waiting to be uncorked, sipped, and discovered!

Check out a Premier Winery

Talk about blazing a trail: **Closson Chase Vineyards**, in Prince Edward County, is one of the pioneers that put the region's cool-climate Pinot Noir and Chardonnay on the map. Housed in a striking purple barn that's surrounded by 30 acres of vines, Closson Chase is a must-visit on any County wine tour.

Stroll Through an Orchard

For a taste of something different, head down the road to **Loch Mar Cider Company**, a small-batch operation with a focus on heritage apples and natural fermentation. The crisp and refreshing results speak for themselves; you'll find Loch Mar ciders on the menu at many local restaurants and bars, paired with farm-fresh meals.

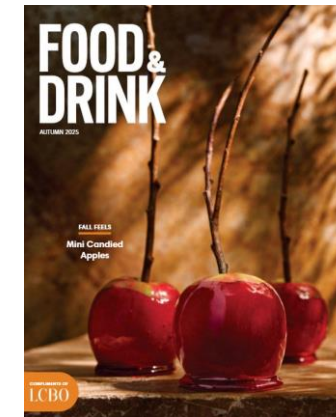
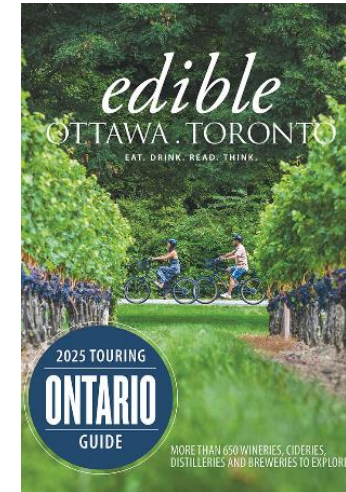
Follow the Bottle & Barrel Trail

Venture east along the St. Lawrence River and you'll find intrigue brewing on **The Bottle & Barrel Adventure Trail**, a self-guided 1000 Islands Rideau Canal Waterways' route that connects breweries, cideries, wineries and distilleries across the area's most scenic communities. Hop in the car and make frequent stops to meet local makers and sample their tasty wares.

More info about this must-visit local region!

South Eastern ONTARIO

A tasting flight from Kempville Brewing Company



#LGEcDevSummit

Adventures – NEW 2026

Animal Friend Adventures

1000 ISLANDS
RIDEAU
CANAL
WATERWAYS




1000 Islands Rideau Canal Waterways – Facebook | Instagram

Like
Follow
Share

1000IslandsRideauCanalWaterways.com

1000 ISLANDS RIDEAU CANAL WATERWAYS

Your home for Christmas



- NOV 21 Light Up the Night • Prescott
- NOV 21–23 Holiday Shop'n Hop Gingerbread Contest • Westport
- NOV 22 eQuinelle Winter Village Market • Kemptville
- NOV 22 Westport Lion's Santa Claus Parade & Toy Drive • Westport

1000IslandsRideauCanalWaterways.com

Holiday Events 2025

**1000 ISLANDS
RIDEAU CANAL
WATERWAYS**
Your home for Christmas

- NOV 22 Coville's Christmas Market • Prescott
- NOV 22 Twinkle & Tiding Night Market • Kemptville
- NOV 22–23 Opinicon Winter Market • Elgin
- NOV 23 Some Kind of Choir Christmas Concert • Westport
- NOV 28 Festival of Lights Tree Lighting • Gananoque
- NOV 28 CPKCR Holiday Train • Merrickville
- NOV 28–29 Tincap Berry Farm Christmas Market • Tincap
- NOV 28–30 Christmas Shop & Hop • Lyndhurst
- NOV 28–30 Festival of Trees • Brockville
- NOV 29 Christmas Market • Gananoque
- NOV 29 Holiday Vendor Market • Lansdowne
- NOV 29 Cardinal Vendor & Craft Sale • Cardinal
- NOV 29 Santa Claus Parade • Gananoque
- NOV 29 SpencerWH0ville • Spencerville
- NOV 29 Jingle Jam Christmas Market • Kemptville
- NOV 29 Christmas on the Farm • Spencerville
- NOV 29–30 Merrickville Makers Market • Merrickville
- NOV 30 Santa in the Silo • Kempville

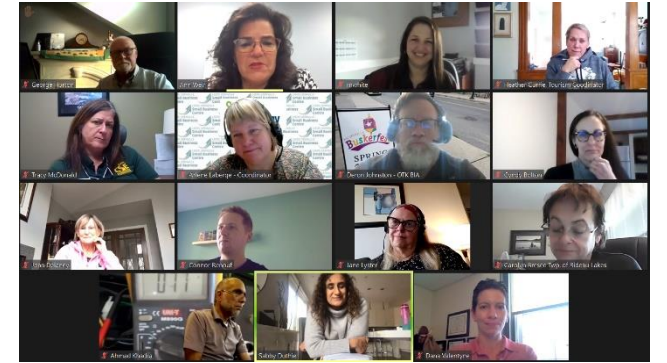


1000IslandsRideauCanalWaterways.com



#LGEcDevSummit

2020 - 2025 Strategic Areas of Focus



#LGEcDevSummit

Numbers

Canadian Business Counts By Employee Size - 10 Year Comparison in Leeds Grenville

	Dec-14	Dec-15	Dec-16	Dec-17	Dec-18	Dec-19	Dec-20	Dec-21	Dec-22	Dec-23
Total # Businesses	8630	8805	8792	8691	8906	8738	8659	8635	9102	9488
Without Employees	5624	5813	5779	5761	5922	5722	5683	5677	6036	6352
With Employees	3006	2992	3013	2930	2984	3016	2976	2958	3066	3136
1-4	1599	1586	1626	1566	1556	1587	1568	1558	1613	1641
5-9	696	693	676	666	715	705	691	685	703	738
10-19	352	354	368	367	379	374	366	393	406	404
20-49	238	239	222	215	213	226	230	216	224	218
50-99	66	67	67	60	69	73	74	63	70	83
100-199	33	30	30	35	32	31	24	21	29	30
200-499	18	19	18	16	14	15	17	18	17	17
500 +	4	4	6	5	6	5	6	4	4	5

99.45%

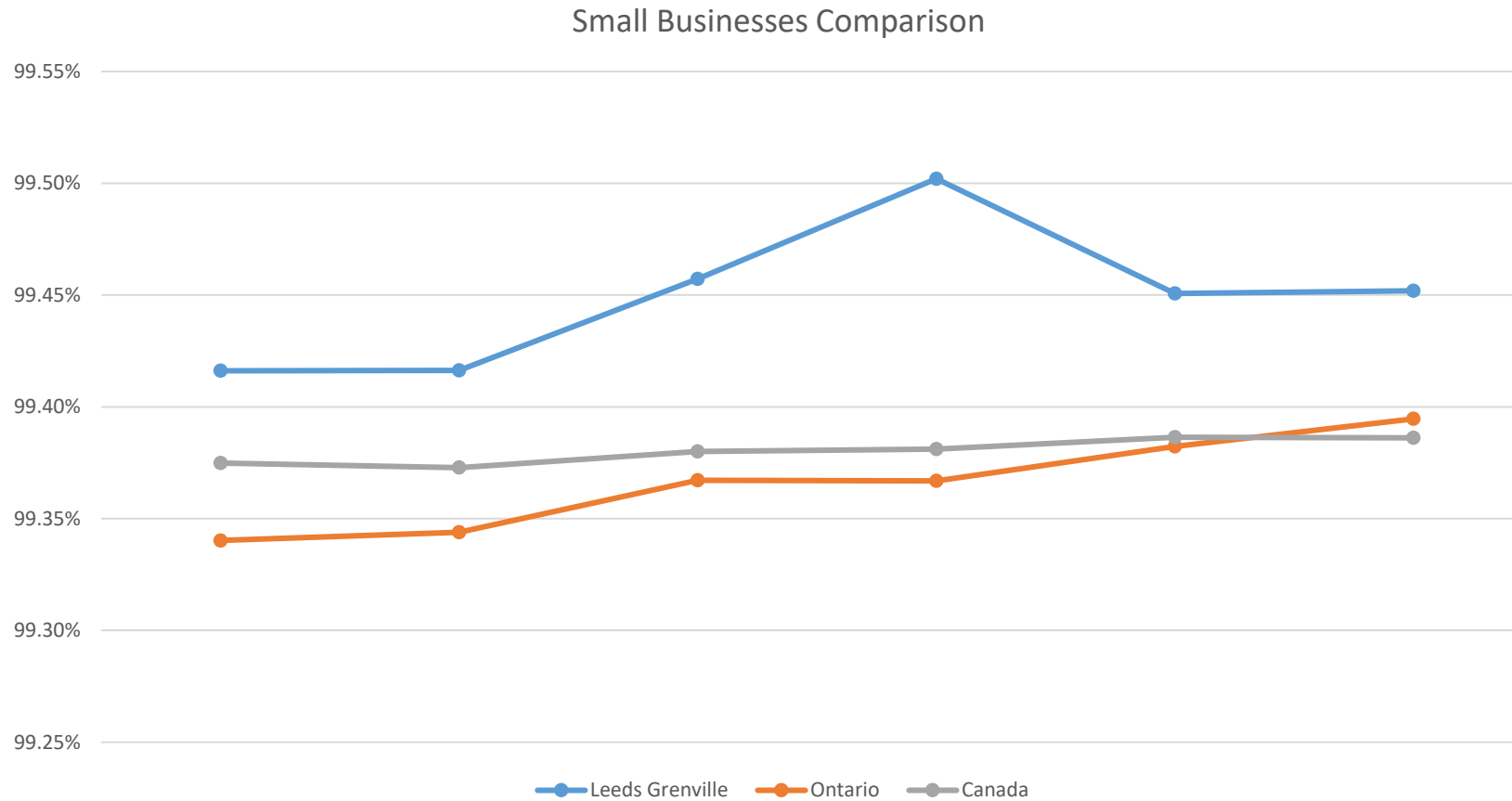
Source: Statistics Canada Canadian Business Counts, Census Divisions - Custom Tabulations - One-Hub (includes classified and unclassified)



#LGEcDevSummit

Small Business Data

6 – Year Canadian Small Business Counts comparison – (99 employees and under)



#LGEcDevSummit

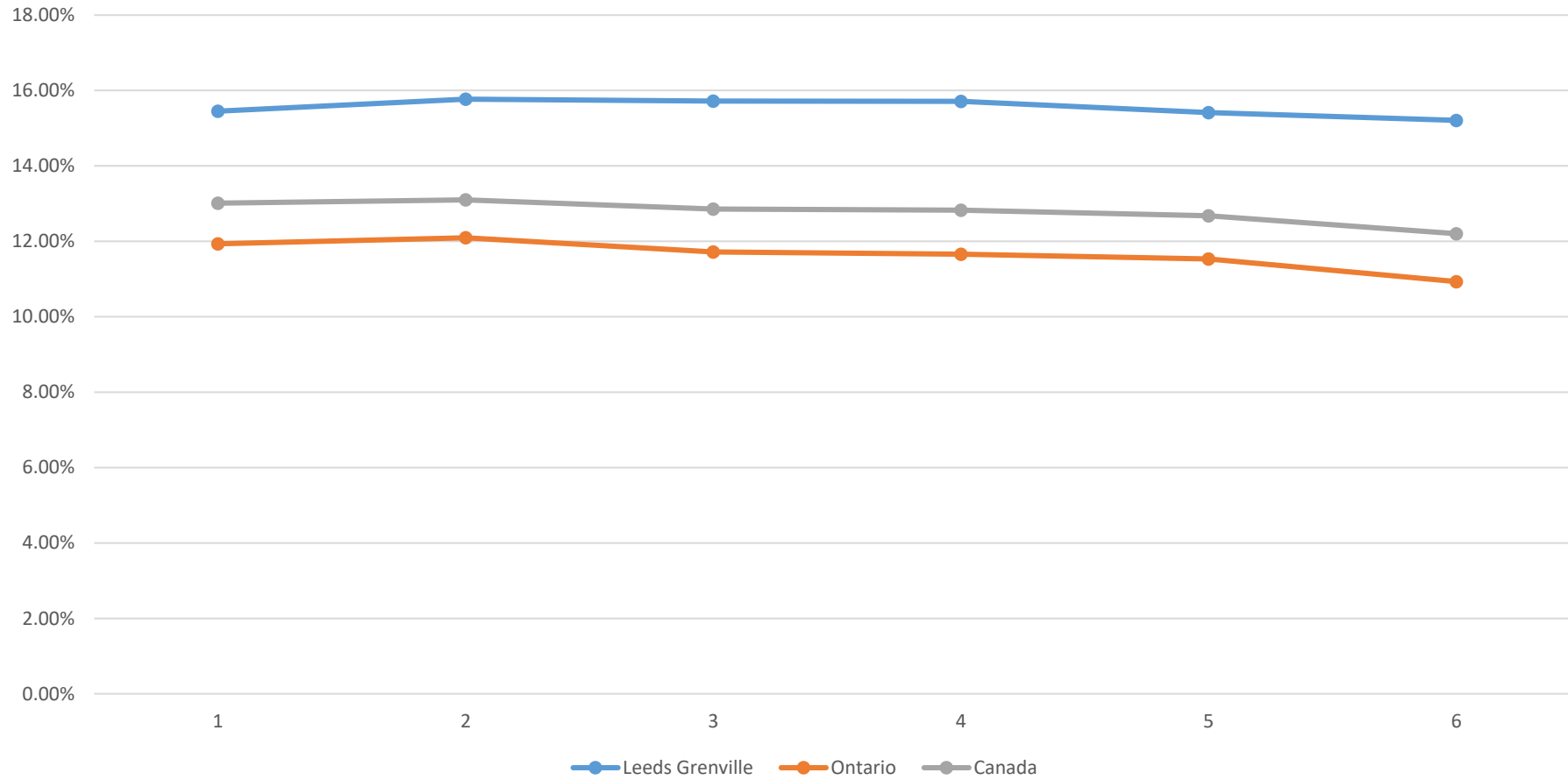
Small Business Data

Leeds Grenville										
Small Business Counts	Dec-14	Dec-15	Dec-16	Dec-17	Dec-18	Dec-19	Dec-20	Dec-21	Dec-22	Dec-23
Without employees & 1-99 employees	8575	8752	8738	8635	8854	8687	8612	8592	9052	9436
Percentage total businesses	99.36%	99.40%	99.39%	99.36%	99.42%	99.42%	99.46%	99.50%	99.45%	99.45%
Without employees	5624	5813	5779	5761	5922	5722	5683	5677	6036	6352
Percentage of total businesses	65.17%	66.02%	65.73%	66.29%	66.49%	65.48%	65.63%	65.74%	66.32%	66.95%
With employees	3006	2992	3013	2930	2984	3016	2976	2958	3066	3136
Percentage of total businesses	34.83%	33.98%	34.27%	33.71%	33.51%	34.52%	34.37%	34.26%	33.68%	33.05%
Micro Business Counts	7223	7399	7405	7327	7478	7309	7251	7235	7649	7958
Percentage of total businesses	83.70%	84.03%	84.22%	84.31%	83.97%	83.65%	83.74%	83.79%	84.04%	84.24%

84.24%

Small Business Data

Businesses with 5 to 99 employees



#LGEcDevSummit

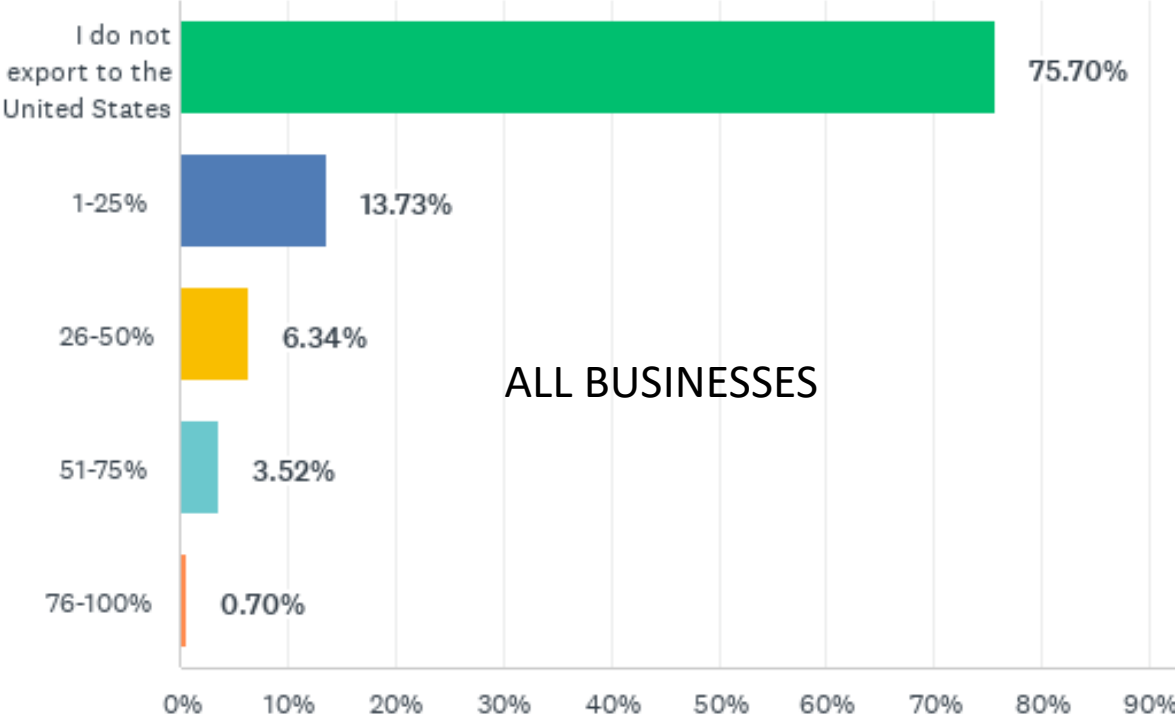
Labour Force – Q1 2025 Estimate – Jobs by Industry

Leeds Grenville (13 municipalities)	Total # Jobs (Self-Employed + Employees)
Total	46,347
Unclassified	702
Sub-total, classified	45,645
11 - Agriculture, forestry, fishing and hunting	1,165
21 - Mining, quarrying, and oil and gas extraction	0
22 - Utilities	200
23 - Construction	3,903
31-33 - Manufacturing	4,642
44-45 - Retail trade	5,679
48-49 - Transportation and warehousing	2,032
41 - Wholesale trade	1,503
51 - Information and cultural industries	457
52 - Finance and insurance	947
53 - Real estate and rental and leasing	721
54 - Professional, scientific and technical services	2,614
55 - Management of companies and enterprises	89
56 - Administrative and support, waste management and remediation services	2,024
61 - Educational services	2,821
62 - Health care and social assistance	6,318
71 - Arts, entertainment and recreation	1,224
72 - Accommodation and food services	3,663
81 - Other services (except public administration)	1,513

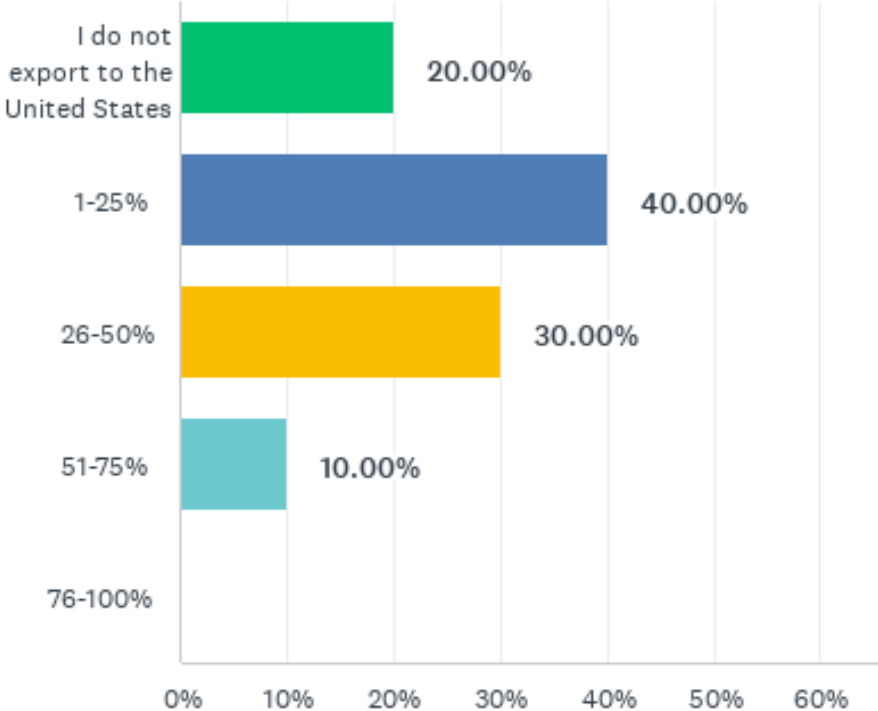
Selected 10 Municipalities in Leeds Grenville	Total # Jobs (Self-Employed + Employees)
Total	25,890
Unclassified	377
Sub-total, classified	25,513
11 - Agriculture, forestry, fishing and hunting	1,051
21 - Mining, quarrying, and oil and gas extraction	0
22 - Utilities	86
23 - Construction	2,773
31-33 - Manufacturing	1,968
44-45 - Retail trade	2,646
48-49 - Transportation and warehousing	965
41 - Wholesale trade	713
51 - Information and cultural industries	350
52 - Finance and insurance	569
53 - Real estate and rental and leasing	391
54 - Professional, scientific and technical services	1,749
55 - Management of companies and enterprises	67
56 - Administrative and support, waste management and remediation services	1,293
61 - Educational services	1,651
62 - Health care and social assistance	2,719
71 - Arts, entertainment and recreation	959
72 - Accommodation and food services	1,753
81 - Other services (except public administration)	987

Business Survey

% of business that exports to the United States



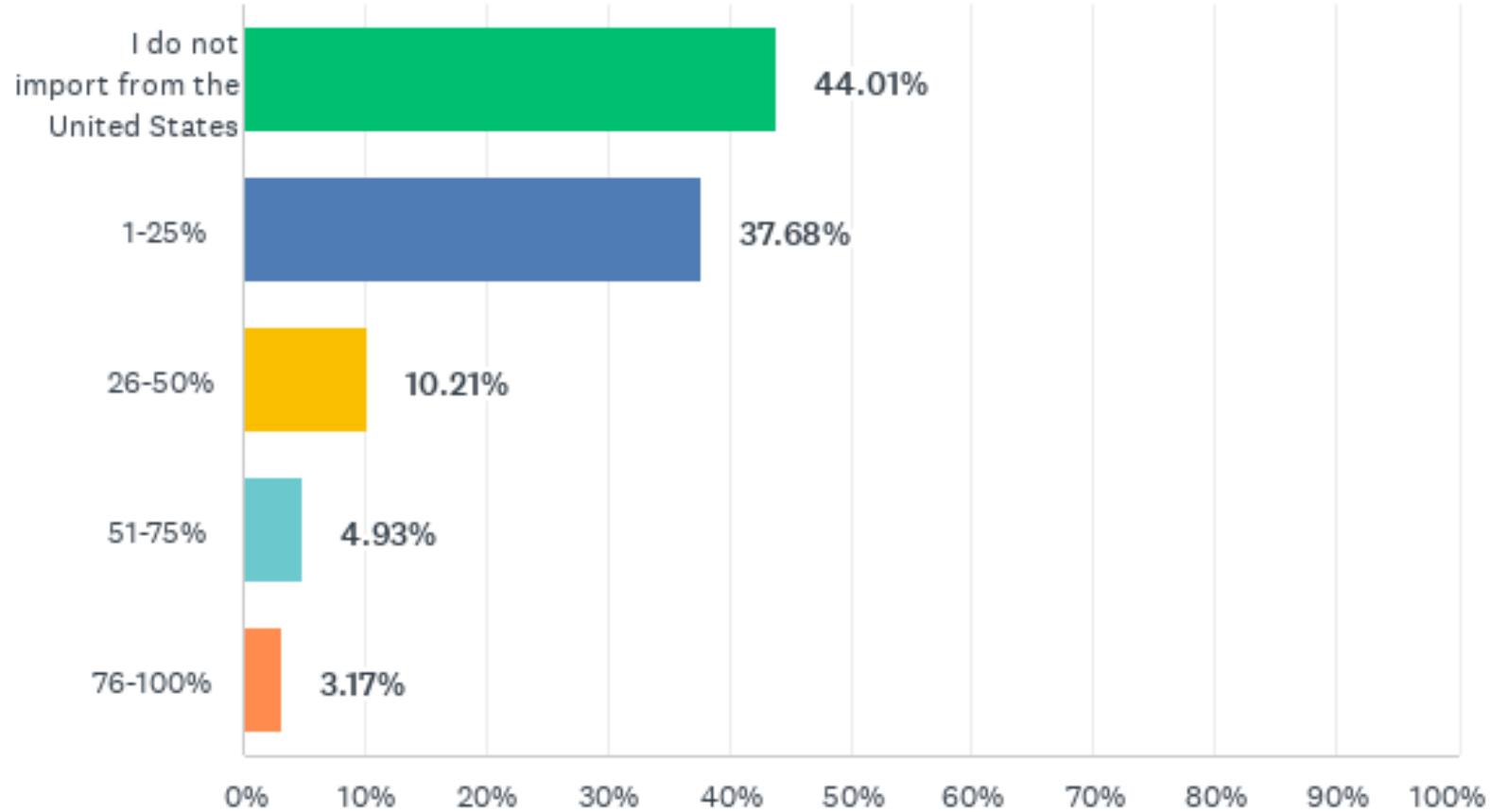
BUSINESSES – 50 FTE > GREATER



#LGEcDevSummit

2025 Business Survey – 285 respondents

% of business that relies on imports from the United States



Business Survey

Impact of 25% tariff on business operations

ANSWER CHOICES	RESPONSES	
Not applicable / I do not export	30.99%	88
No impact	11.97%	34
Minor impact	33.10%	94
Moderate impact	16.55%	47
Significant impact	6.34%	18
Business is now threatened impact	1.06%	3
TOTAL		284

Strategy Planning Sessions



In-Person Sessions:

Session 1

When: Monday, June 23

Time: 9:30-11 a.m.

Where: The Drummond Building, 22 Ryan Street, Spencerville
in partnership with:



Community Futures
Grenville

[Register](#)

Session 2

When: Monday, June 23

Time: 2-3:30 p.m.

Where: South Elmsley Municipal Complex, 441 Highway 15
in partnership with:



Valley Heartland
CFDC

[Register](#)

Session 3

When: Wednesday, June 25

Time: 10:30-12 p.m.

Where: Athens Free Methodist Church, 58 Elgin Street
in partnership with:



1000 Islands CDC
Supporting Business Success

[Register](#)

Session 4: Virtual Zoom

Wednesday, June 25, 7 p.m.

[Register](#)



#LGEcDevSummit

Strategy Planning – Consultations Overview

- Sector-Specific B2B Collaboration and Networking
- Comprehensive Small Business Support System
- Regional One-Stop Business Portal
- Workforce and Youth Development Strategy
- Regional Tourism Collaboration and Infrastructure
- Business Mentoring and Succession Planning Network
- Grant Navigation and Funding Support
- Sector Development and Innovation Focus
- Infrastructure and Digital Connectivity Enhancements
- Inclusive Economic Participation and Settlement Support



#LGEcDevSummit

2026-2029 Strategic Areas of Focus



- Leadership and Capacity Building
- Business Development / Investment Attraction
- Talent Attraction and Workforce Development
- Marketing and Communications

Leadership and Capacity Building

- **Economic Development Summit**
 - 2026 – Friday, November 20th
- **Business Support Working Group**
- **Relationship / Partnerships**

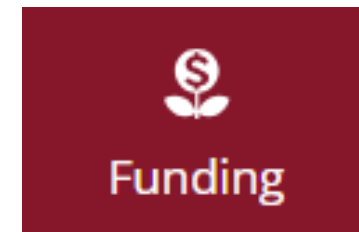
**SAVE
THE
DATE**



#LGEcDevSummit

Business Development / Investment Attraction

- **Business Continuum Approach**
 - From ideation to succession planning
- **Small Business Centre**
 - Ministry contract renewal / update programming
 - Youth entrepreneurship action plan
 - Collaboration with municipalities, school boards, BIAs, Chambers
- **Business Mentorship / Coaching Program**
- **Support Businesses in Navigating Funding Programs**



Business Development / Investment Attraction

- Expand business-to-business engagements through programming

**International
Women's Day**

Thursday, March 5, 2026



**Wholesale Food
Tradeshow**

March 23 or 24, 2026



**BRIDGES
to Better Business**

Thursday, October 22, 2026



Business Development / Investment Attraction

- **Regional Tourism Destination Strategy**
 - Redevelopment of tourism website
 - Undertake a regional tourism way-finding signage strategy
 - Consumer eNewsletter
 - Convert Adventures annual launch to regional tourism event
 - Continue and expand collaborative tourism initiatives
 - Animal Friend Adventures
 - Collaborate and leverage opportunities for the 200th anniversary of the Rideau Canal

**1000
ISLANDS
RIDEAU
CANAL
WATERWAYS**



#LGEcDevSummit

Business Development / Investment Attraction

- **Foreign and domestic investment attraction**
- **Digital platform for property listings**
- **Transition regional business directory in coordination with CRM system**
- **Investment readiness support**
- **Investigate strategies to support top industries and emerging sectors**
- **Respond to economic decisions impacting the region**



Talent Attraction and Workforce Development

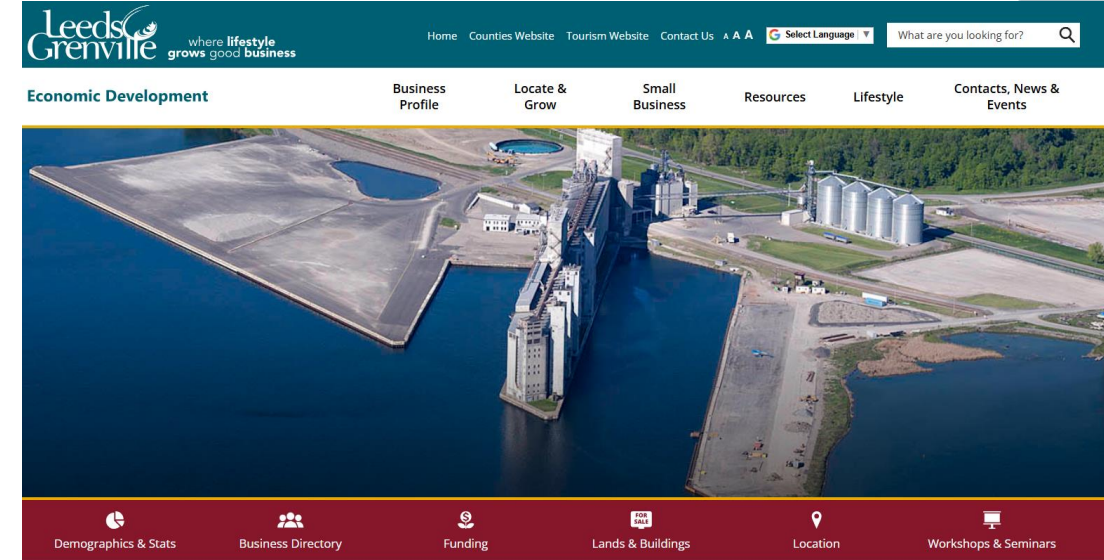
- **Facilitate and partner on funding programs that supports in-demand skills and upskilling**
- **Support youth employment strategies with businesses and organizations in the region**
- **Promote employer connections with education institutions**
 - Internships and co-op programs
- **Facilitate stronger collaboration amongst agencies providing settlement services**



#LGEcDevSummit

Marketing and Communications

- **Transition Economic Development website**
- **Transition business eNewsletter**
- **Update promotional tools**
- **Create a stronger Invest Leeds Grenville profile**
 - regional, provincial and national levels



#LGEcDevSummit

Questions



www.investleedsgrenville.com



#LGEcDevSummit

Thank You!

- ✓ Summit Evaluation Form
- ✓ Name Tag Recycling
 - Return the Tag, Keep the Lanyard
- ✓ Save the Date – **Friday, November 20, 2026**

**SAVE
THE
DATE**



#LGEcDevSummit