



**Port of
Prescott**

A Division of Edwardsburgh / Cardinal



Port of Prescott Marine Terminal Project

Agenda

- Introduction/history of the port
- Port Services
- Capital Project
- Future Opportunities
- Movie Clip – Phase I construction

History



Port Divestiture

- The National Marine Policy, announced in December 14, 1995
- Rationalize the Canadian Marine transportation system.
- One initiative within this policy framework was the port divestiture program.

Grain Business



Grain Services



Grain Service Area



Marine Business



Advantages - Location Location Location



**PORT - SEAWAY
DEPTH**

**INTERNATIONAL
BRIDGE**

**INDUSTRIAL
PARK - 350
ACRES**

**CN AND
CP RAIL**

401 AND 416

**PROXIMITY
TO AIRPORT**


Houston, we have a problem




Port Upgrades Amélioration Des Ports

CREATING JOBS. BUILDING ONTARIO.
CRÉER DES EMPLOIS. BÂTIR L'ONTARIO.

www.ontario.ca/infrastructure

PORT UPGRADES
AMÉLIORATION DES PORTS



CANADA'S ECONOMIC
ACTION PLAN
D'ACTION
ÉCONOMIQUE DU CANADA

Canada

ACTIONPLAN.GC.CA | PLANDACTION.GC.CA

PORT OF PRESCOTT

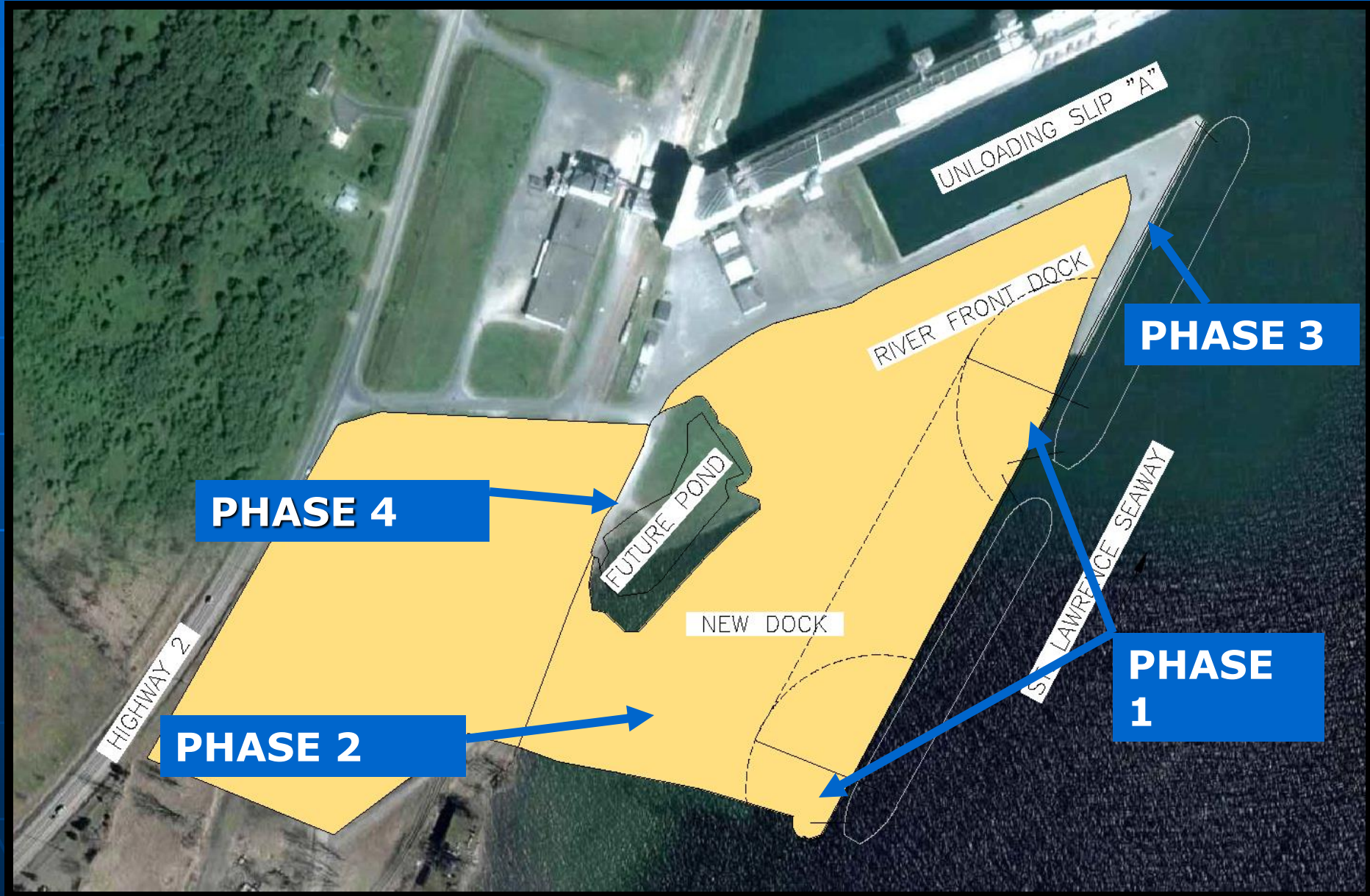



PORT UPGRADES AMÉLIORATION DES PORTS

New Marine Terminal Project



Phases 1 to 4



Phase 5 - Fish Habitat

**Fish Habitat -
Replace
42,000 Sq.
mts. of water
that was
reclaimed for
Port project.**



Phase 6

- Paving
- Lighting
- Fencing / Gates



Phase 7



Rehab Harbour Front Dock

The Engineering Team



Mar-Land

C.B Farin

Portha Inc

Hennessy Inc.



The Environmental Team



**South Nation
Conservation Authority**



**Mowhawk Council of
Akwesasne**





Investing in Marine Commerce



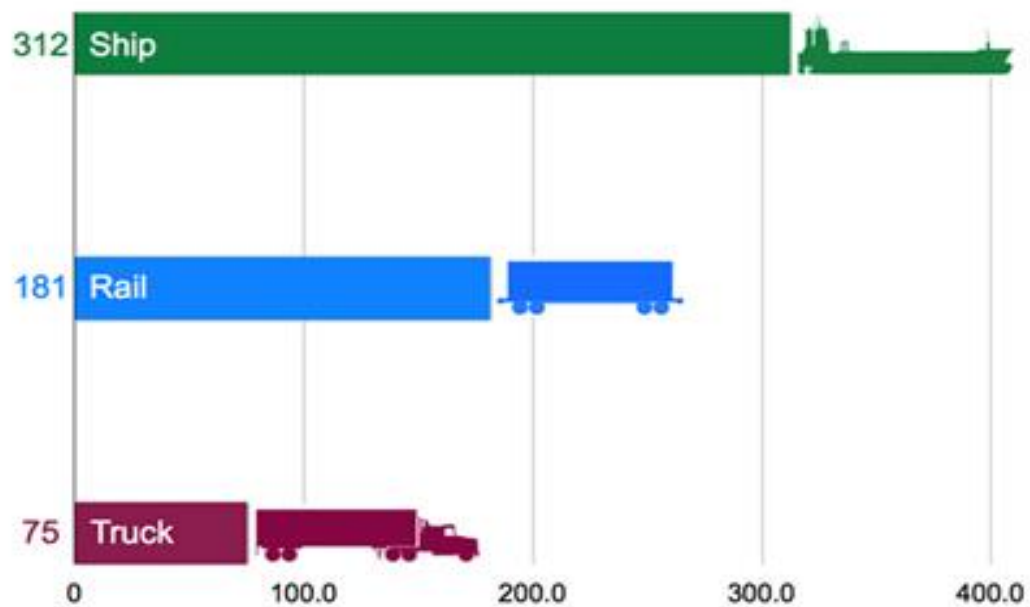


- **The Great Lakes-Seaway marine shipping industry supports 227,000 jobs in the U.S. and Canada, generates \$35 billion in business revenue, and moves 164 million metric tonnes of cargo annually on the system.**



Economical

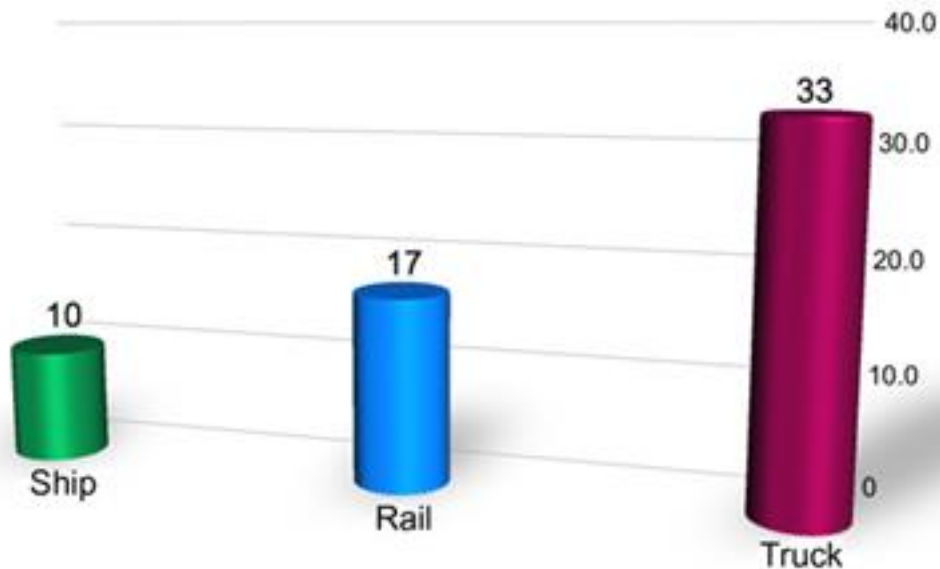
Fuel Efficiency
Distance in Kilometres that One Tonne of Cargo Travels
on 1 Litre of Fuel



Environment

Greenhouse Gas Emissions

Grammes of CO₂ per Tonne of Cargo Transported One Kilometre



Canadian Steamship Lines

Trillium Class Vessels



Algoma Central

EQUINOX **X**
CLASS 



The Future looks bright



Current Cargo



Project Cargo





Aggregates



Biomass Products - Wood Pellets



New Marine Terminal Phase I





**Port of
Prescott**

A Division of Edwardsburgh / Cardinal

**Leeds
Grenville**



**Eastern Ontario's Premier Port
..... is your Port**